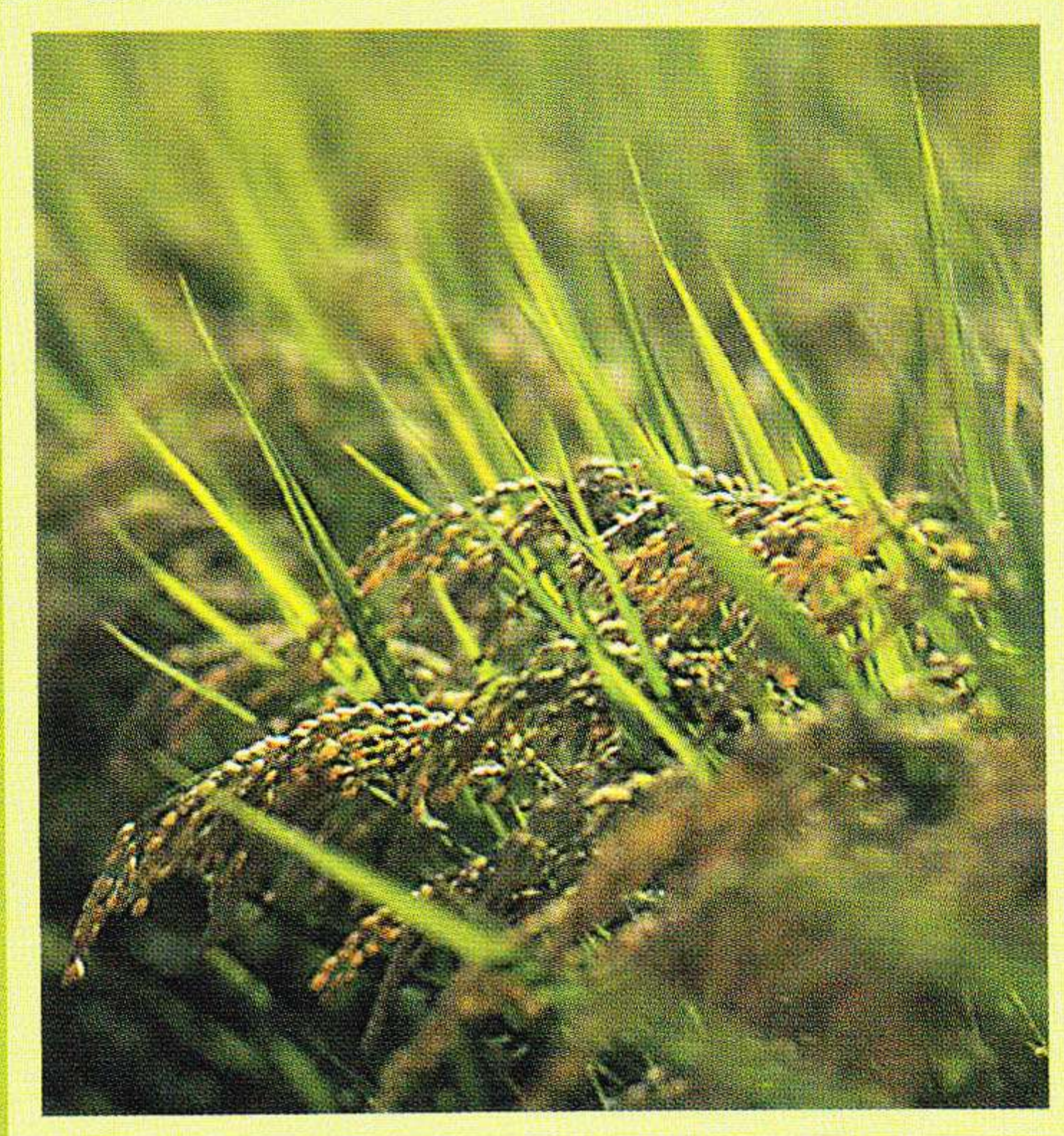


Introduction

Lentin Plus 1000 is made from rice bran. The Chinese character for "rice bran" consists of two characters that individually mean "rice" and "health." The Japanese of former times were probably fully aware that rice bran was good for health.



BioBran (Rice Bran Arabinosyl Compound), an active ingredient of Lentin Plus 1000, is produced by hot-water extract of rice bran containing mainly water-soluble dietary fiber (hemicellulose B) with an enzyme derived from shiitake mushrooms.

BioBran is highly valued in 49 countries including America, Europe and Asia.

*Process Patent: Japan No.3519187, U.S.A. No.5560914, UK, France, Spain, Italy, Germany, and Portugal No.753582, South Korea No.344755

Effective for

Weakened immune activities

Stress Insufficient rest Surgery

Immune abnormalities and overreaction

Pollution Allergens Heredity

Improving QOL-Quality of Life

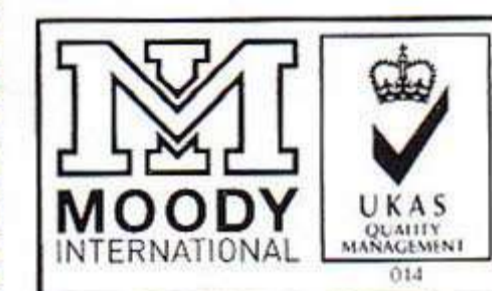
Medications Poor diet Aging

Warning: Consult with your health care professional prior to usage if you are pregnant, nursing, are being treated for any medical conditions, or are taking any medications.

*All rights reserved.

*For distributors only.

*Not authorized by institutions with legally binding power.



ISO9001: 2008 certified
Tsukuba plant: ISO9001+HACCP

DP Daiwa Pharmaceutical Co.,Ltd.

1-16-19 Sangenjaya, Setagaya-ku, Tokyo #154-0024 Japan
TEL: +81 3-5430-4070 FAX: +81 3-5787-3780
e-mail: info@daiwa-pharm.com <http://www.daiwa-pharm.com>

LENTIN PLUS 1000



**NEED
STRONGER
IMMUNITY?**

**DP Daiwa
Pharmaceutical Co.,Ltd.**

Functional Benefits



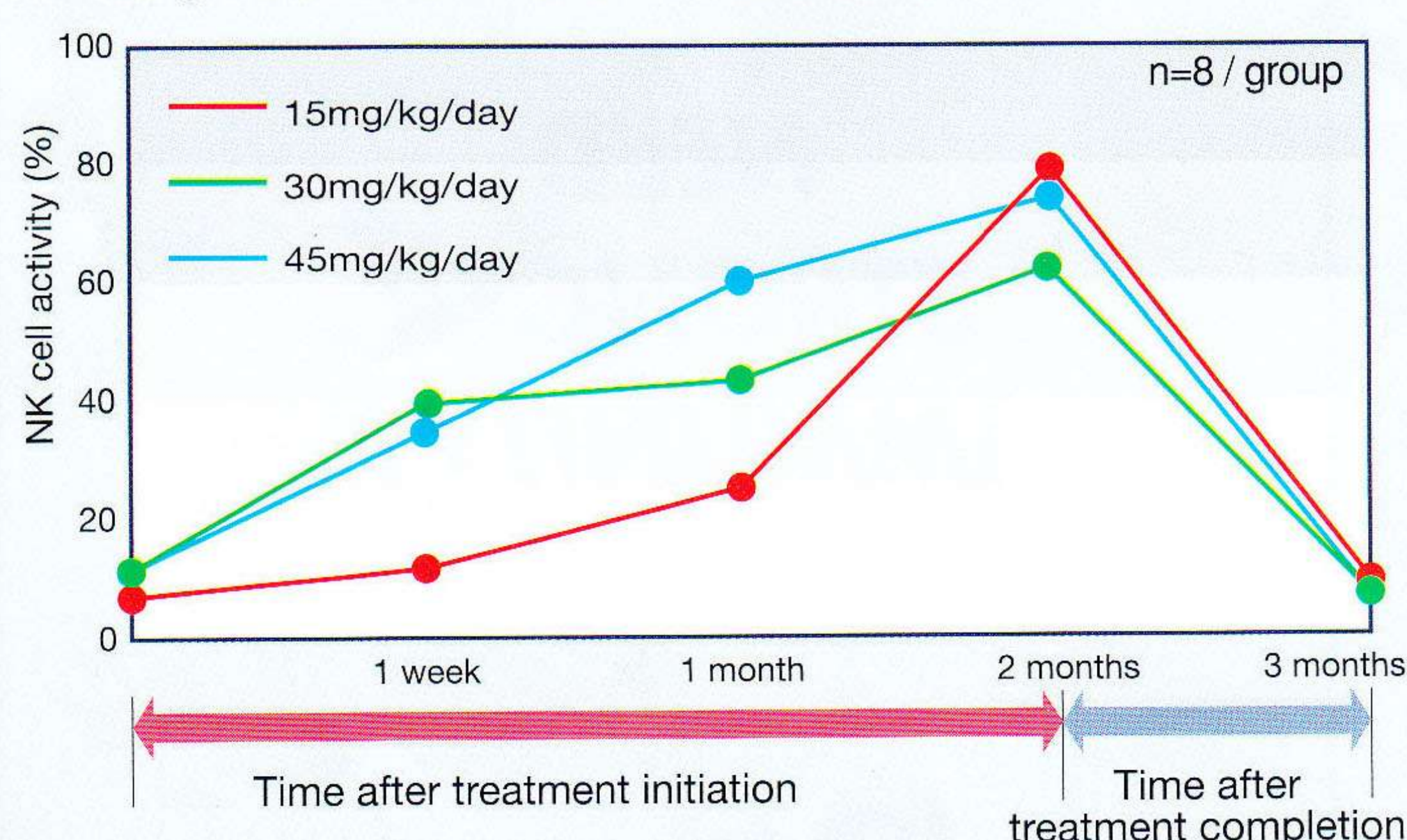
LENTIN PLUS 1000

30 packets, 105 packets, 126 packets
Recommended intake : 1-3 pkts/day BioBran 1000mg/pkt

Enhancement of immune cell activity

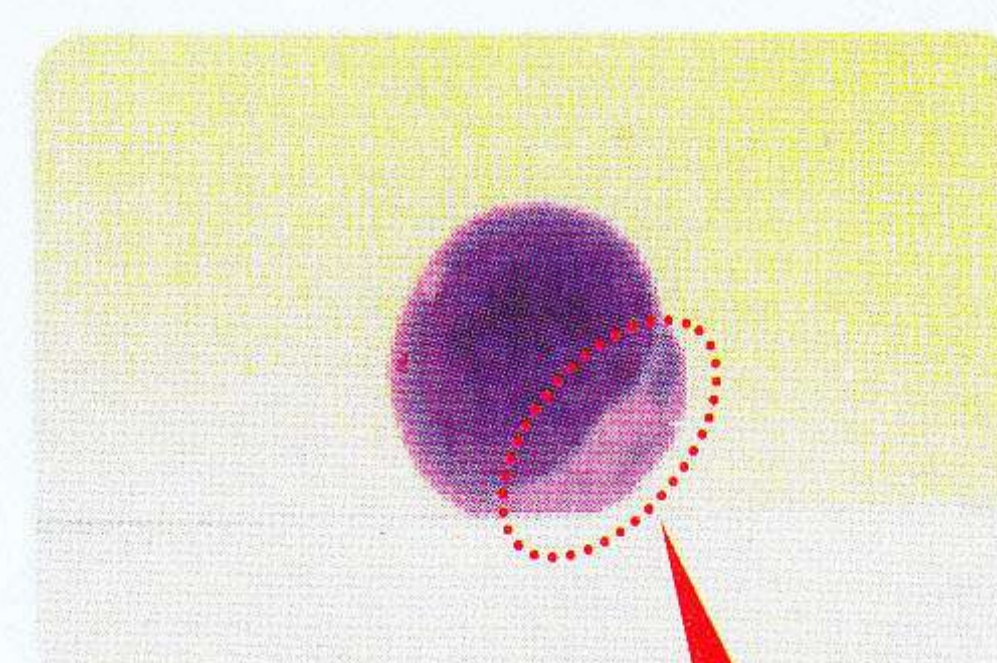
Lentin Plus 1000 naturally enhances the activities of immune cells, such as T cell, B cell, and Natural Killer (NK) cell.

Changes over time in human NK cell activity by intake of BioBran



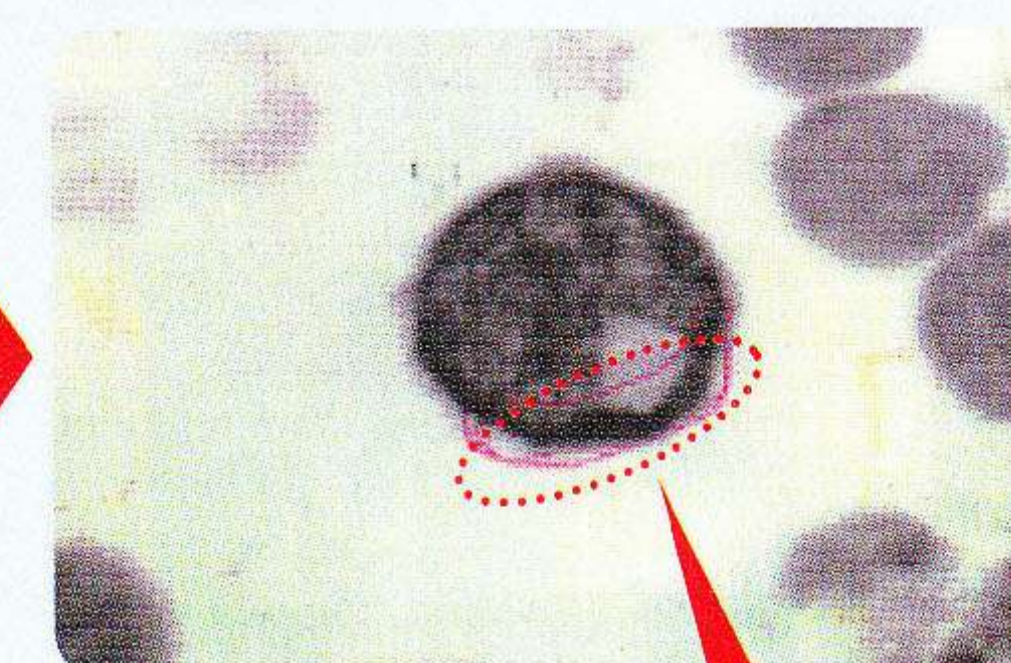
Ghoneum M., Drew Univ.: Enhancement of human natural killer cell activity by modified arabinosyl from rice bran (MGN-3), INT. J. IMMUNOTHERAPY XIV (2) 89-99 (1998)

■ Before BioBran administration



Absence of granules on cell cytoplasm around nucleus

■ 2 weeks after BioBran administration



Presence of granules

Intestinal absorption

When BioBran, the main ingredient of Lentin Plus 1000 is orally taken, immunoreactive components of the polypeptides and polysaccharides are clearly absorbed from the intestine into the blood.

Endo Y., Kanbayashi H. McMaster Univ.: Modified Rice Bran Beneficial for Weight Loss of Mice as a Major and Acute Adverse Effect of Cispratin, Pharmacology and Toxicology, 92, 2003, 300-303 (2003)

FAQ

What is the difference between BioBran and naturally occurring arabinosylan?

Arabinosylans are common dietary fibers contained in plants such as rice, wheat and corn. BioBran is obtained from rice bran arabinosylan through enzymes extracted from shiitake mushrooms to reduce the molecular weight of the arabinosylan, facilitating absorption into the body. BioBran has a lower molecular weight than naturally occurring arabinosylan, and because of this, it can be partially absorbed through the small intestine.

How does Lentin Plus 1000 work in the body?

BioBran, an active ingredient of Lentin Plus 1000 characteristically works for both "intestinal immunity" and "immune cells in the blood." Because it is derived from the natural dietary fiber of rice bran, it is free from harmful side-effects.

Ordinary dietary fibers are not digested or absorbed but are excreted from the large intestine.

BioBran does not have to be broken down in the digestive process but can be partially absorbed directly into the blood from the small intestine to interact with NK cells and macrophages.